

Scaling a Cybersecurity Startup With Strong Financial Foundations



CLIENT

Tidal Cyber



INDUSTRY

Cybersecurity



OUR ROLE

- ▶ Outsourced Accounting
- ▶ FP&A
- ▶ CFO Advisory

Cherry Bekaert supported a cybersecurity startup's financial operations from the beginning, enabling rapid growth.

Founded in 2022 as a spin-off from Mitre Inc., Tidal Cyber helps organizations measure and improve effectiveness of their security stack against real-world threats and adversary behavior. Tidal Cyber Chief Executive Officer (CEO) Rick Gordon facilitated an early collaboration with Cherry Bekaert to establish scalable financial operations that enabled transparency, accuracy and investor readiness.

Offering Guidance From Day One

Services provided by Cherry Bekaert included:

- ▶ Accounting and bookkeeping
- ▶ Payroll management
- ▶ Financial planning and analysis (FP&A)
- ▶ Strategic CFO advisory

With these functions managed by Cherry Bekaert, Tidal Cyber's leadership could focus on product development and client engagement, confident in the company's financial strength.

Achieving Rapid Growth

Thanks to a strong financial foundation, Tidal Cyber achieved key milestones, including:

- ▶ A 29-member team advancing platform capabilities
- ▶ Consistent revenue through strategic execution
- ▶ Supported by established investors and robust financial management

These metrics demonstrate how disciplined financial operations can enable confident scaling and strategic decision-making.

Why Financial Operations Matter for Startups

Tidal Cyber's journey illustrates an essential lesson for startups: innovation alone is not enough. Strong financial operations provide:

- ▶ Clarity and transparency for investors and stakeholders
- ▶ Informed decision-making through accurate reporting
- ▶ Efficiency by reducing administrative burdens
- ▶ Scalability to support growth without bottlenecks

For More Information, Contact Us:



Jenni Huotari

Partner, Outsourced Accounting Services Leader
jenni.huotari@cbh.com



Jeffrey Furst

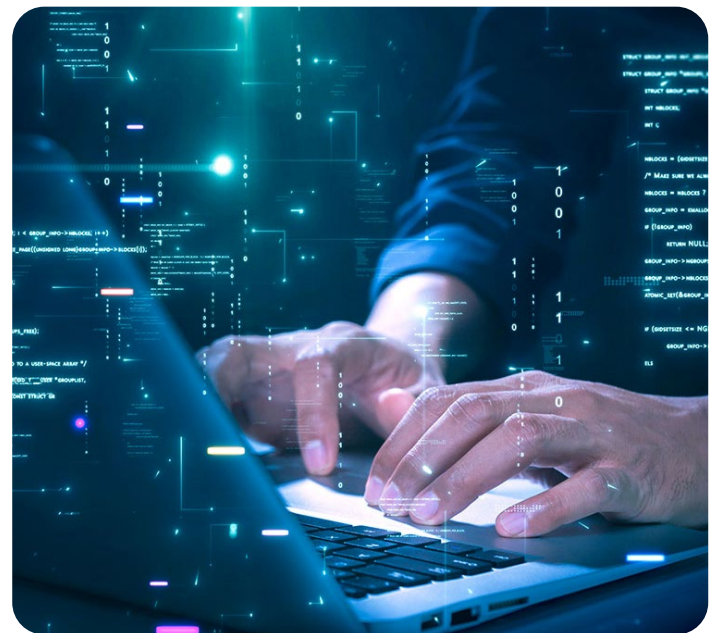
Partner, Outsourced Accounting Services
jeff.furst@cbh.com

Your Guide Forward

At Cherry Bekaert, we help startups and growth-stage companies build strong financial foundations. Our approach allows businesses to remain compliant while positioning to scale, raise capital and achieve long-term success. By providing comprehensive support, including [outsourced accounting](#), payroll, FP&A, and [CFO advisory](#), we help our clients:

- ▶ Focus on core operations without financial distractions
- ▶ Deliver accurate, investor-ready financial statements
- ▶ Make data-driven strategic decisions with confidence

Tidal Cyber demonstrates how pairing innovation with strong financial management enables startups to thrive. From early-stage setup to scaling operations, Cherry Bekaert structures financial operations to act as a driver rather than a bottleneck. By establishing robust financial strategies from day one, startups can scale with confidence, earn investor trust and focus on innovation.



About Cherry Bekaert

Cherry Bekaert Advisory LLC and Cherry Bekaert LLP (Cherry Bekaert) provide professional services through an alternative practice structure in accordance with the AICPA Code of Professional Conduct and applicable laws, regulations, and professional standards. Cherry Bekaert LLP is a licensed independent CPA firm that provides attest services to its clients. Cherry Bekaert Advisory LLC and its subsidiary entities provide tax and business advisory services to their clients. Cherry Bekaert Advisory LLC and its subsidiary entities are not licensed CPA firms. For more details, visit cbh.com/disclosure.

© 2026 Cherry Bekaert. All Rights Reserved. This material has been prepared for general informational purposes only and is not intended to be relied upon as tax, accounting, or other professional advice. Before taking any action, you should consult a professional advisor familiar with your particular facts and circumstances.

v. 041326 Case-Study_Tidal-Cyber-Case-Study_4415113982

cbh.com

